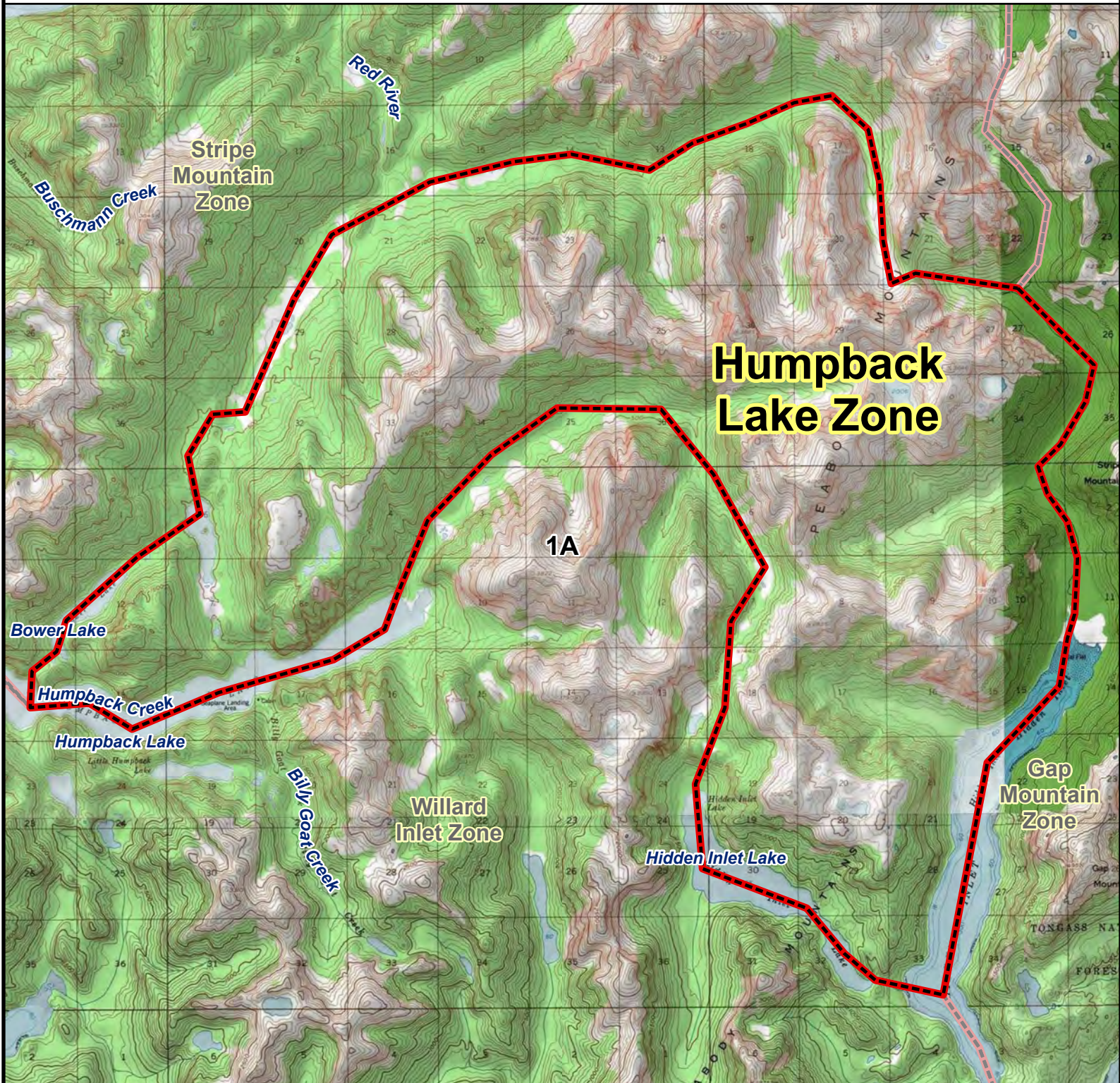


# RG002 MOUNTAIN GOAT HUNT

## Humpback Lake Zone



**Humpback Lake Zone:** Originating at the point in the west end of Humpback Lake at GPS coordinates N 55.017502, W -130.606143, then northeast over land to Bower Lake, northeast through Bower Lake, then northeast through the drainage that runs through the Peabody Mountains to GPS coordinates N 55.084909, W -130.366125, then east and south from that saddle along the drainage to where it empties into the head of Hidden Inlet, then southwest through Hidden Inlet to where Hidden Inlet Lake flows into Hidden Inlet, then northwest through Hidden Inlet Lake to the northern end of the lake, then north and west along the valley drainage that flows into Humpback Lake, and into the east end of Humpback Lake, then southwest to the point of origin.

